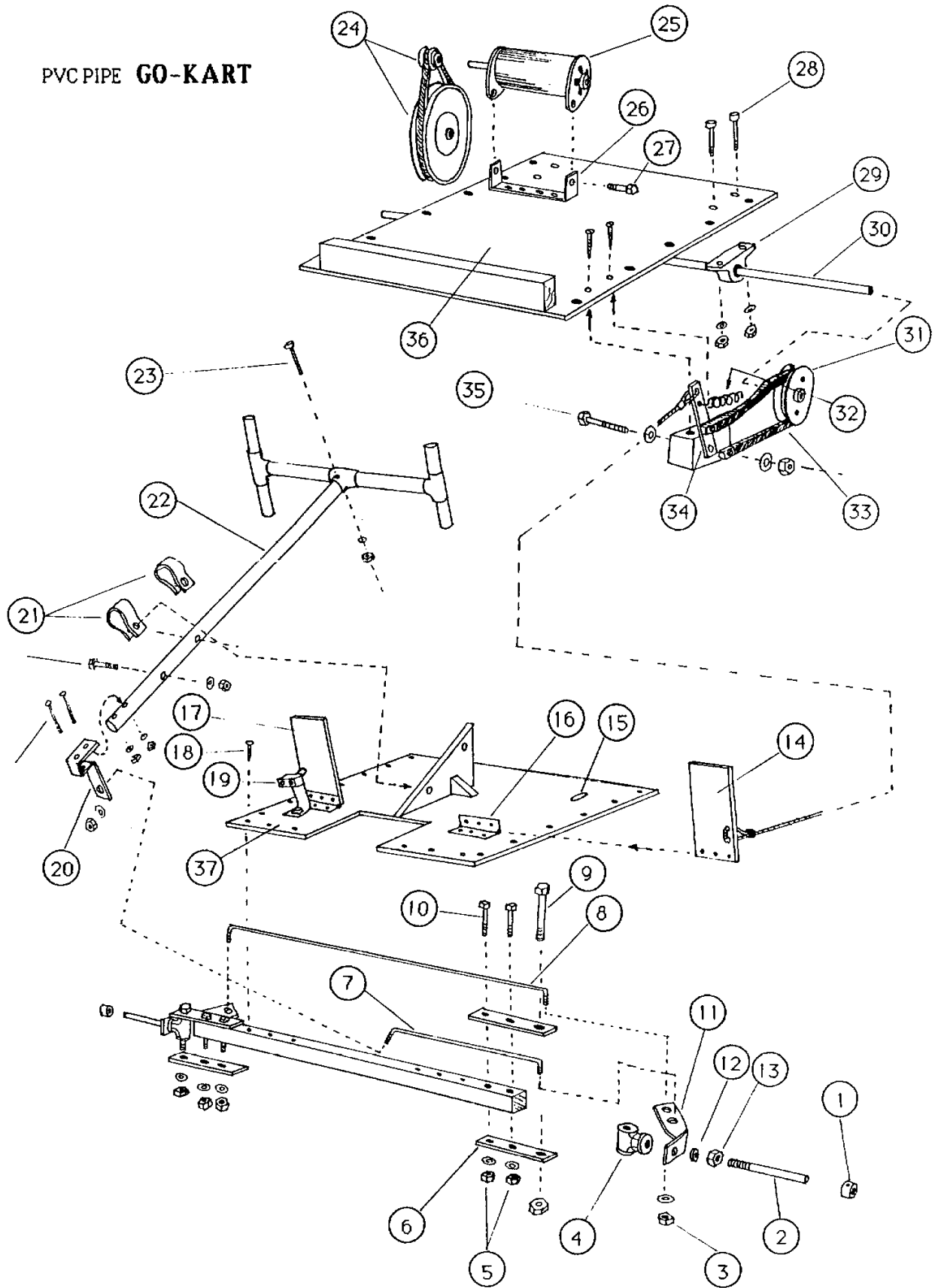
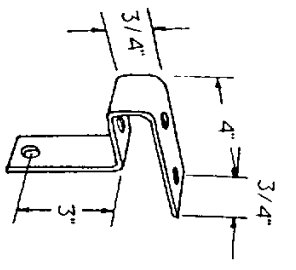


FRONT AND REAR CHASSIS BREAK-DOWN VIEW

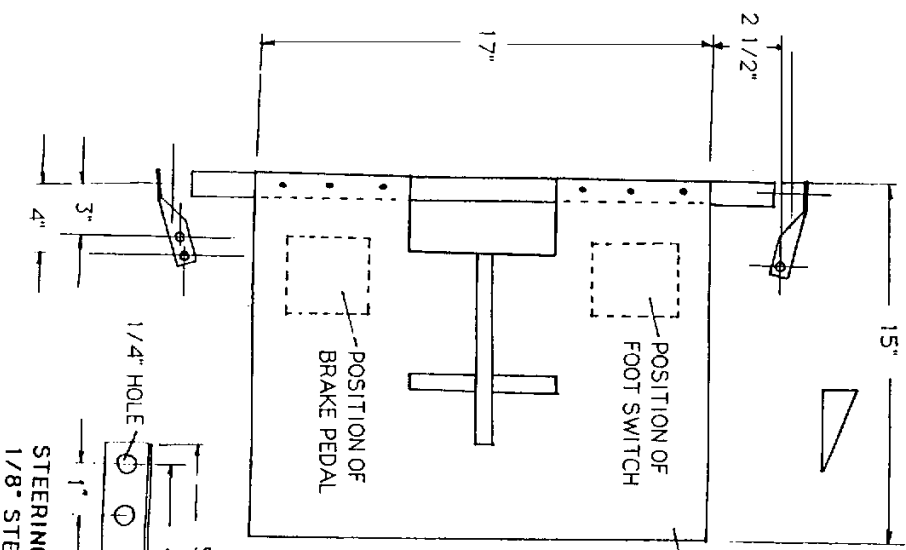
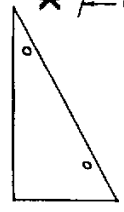
PVC PIPE GO-KART



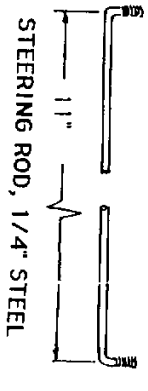


STEERING CRANK
1/8 IN. STEEL

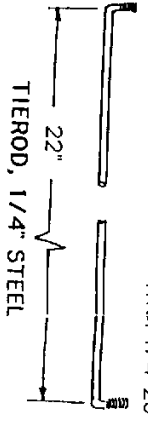
STEERING COLUMN
SUPPORT, 3/4" PLYWOOD



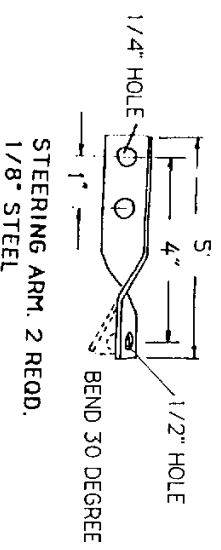
FRONT CHASSIS
1/4" PLYWOOD



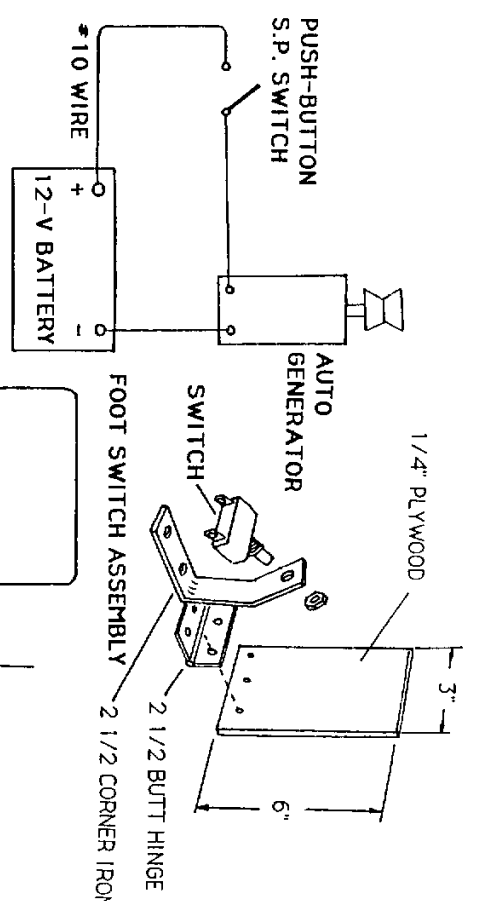
STEERING ROD, 1/4" STEEL
TH'D. 1/4-20



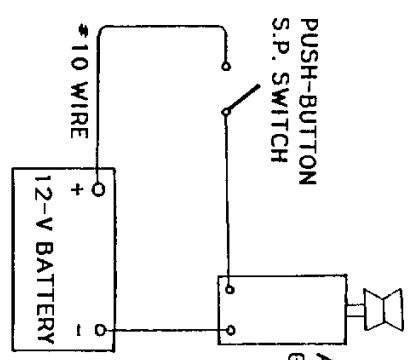
TIER ROD, 1/4" STEEL
TH'D. 1/4-20



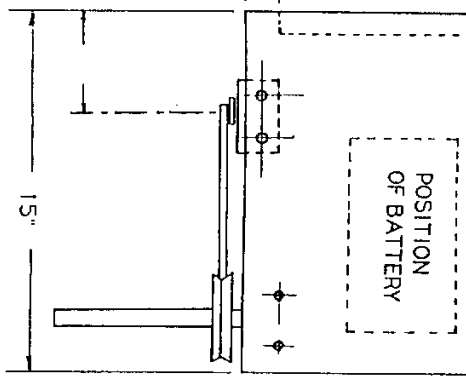
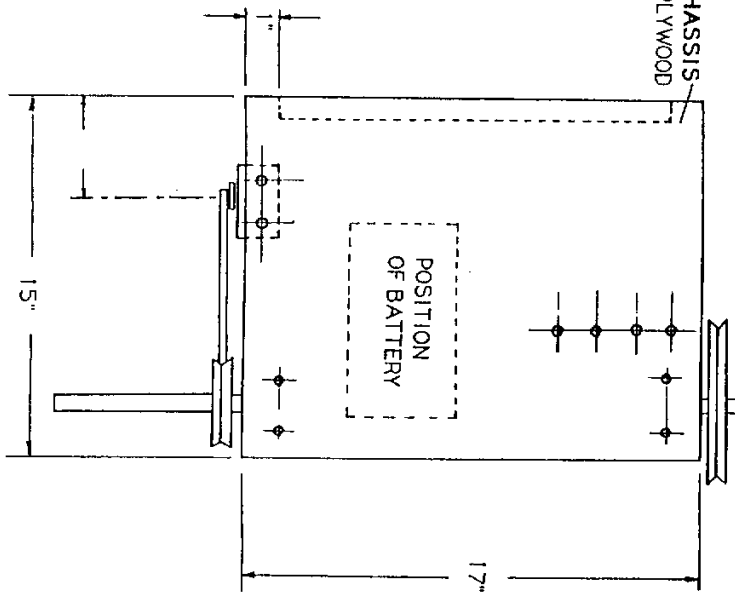
STEERING ARM, 2 REQD.
1/8" STEEL



REAR CHASSIS
1/4" PLYWOOD

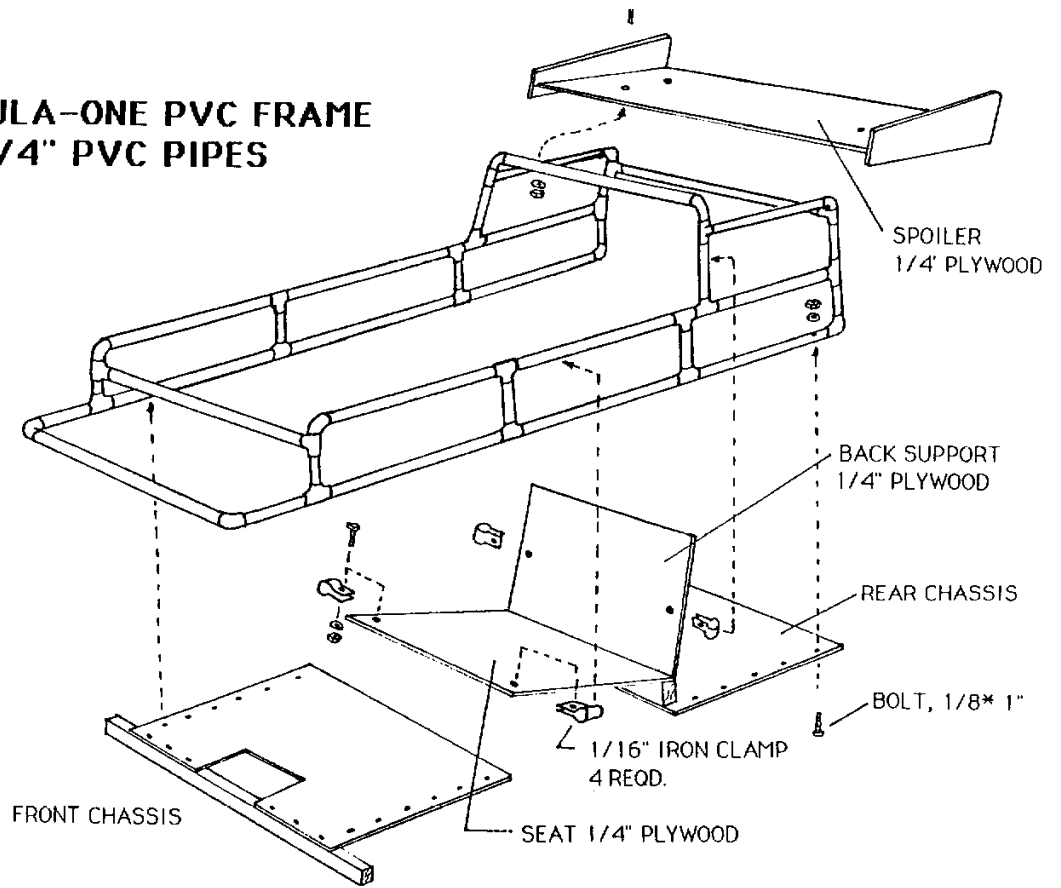


FOOT SWITCH ASSEMBLY
2 1/2 BUTT HINGE
2 1/2 CORNER IRON

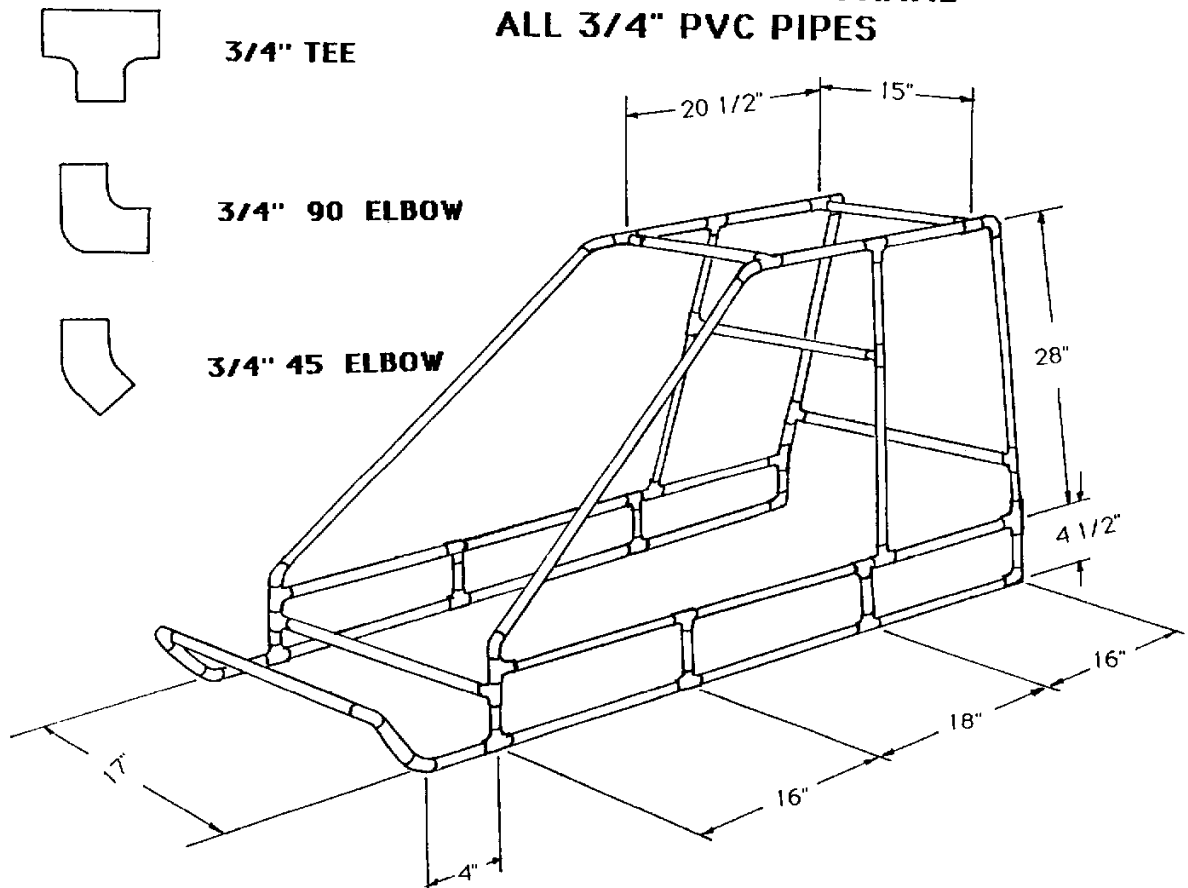


POSITION OF BATTERY

**FORMULA-ONE PVC FRAME
ALL 3/4" PVC PIPES**



**BAJA-STYLE PVC FRAME
ALL 3/4" PVC PIPES**



Before you buy or cut any materials go through the part listing and check each with the break-down view so that you can have a better idea of what goes where. Formula One and Baja style are different only on the upper roll bars. The seat of 16 inches wide seats one kid or may seat two smaller kids. For wider seat, increase dimensions on both plywood-chassis and PVC pipes sideways up to 22 inches. You can choose wheels of various sizes and style; they may come from old Go-Karts or toy Karts. The front wheels should be free to rotate from the spindle (ball-bearings are desirable). Rear wheels would need to fix with the axle with shaft collars or applying epoxy glue. All PVC pipes are 3/4 inch in diameter; joints for pipes are: tee, elbow-45 and elbow-90. The extension that joints provide vary to different manufacturers, therefore no exact dimensions are given to each section of pipes. As long as each pipe is cut symmetrically and consistently according to the sizes shown in the plans, some errors are allowed. Paint colors are optional. Fine sand the surface of PVC pipes before painting for better result.

KEYED LEGENDS

1. SHAFT COLLAR, 1/2 IN.
2. WHEEL SPINDLE, 1/2 * APPROX. 3 IN. STEEL. 1/2-13.
3. HEX NUT, 1/4 IN., WITH WASHER
4. PIPE TEE, 1/4 IN. TWO REQUIRED. THREADS OUT TO TAKE
1/2 IN. KINGBOLT.
5. HEX NUTS AND LOCK WASHERS, 1/4 IN.
6. AXLE STRAPS, FOUR REQUIRED.
7. STEERING ROD
8. TIEROD
9. KINGBOLT, 1/2 * 2 1/2 IN., TWO REQUIRED
10. HEX-HEAD MACHINE BOLT, 1/4 IN. * 2 1/4 IN.
11. STEERING ARM. TWO REQUIRED. ONE HAS THIRD HOLE FOR
STEERING ARM
12. LOCK WASHER, 1/2 IN.
13. HEX. NUT, 1/2 IN.
14. BRAKE PEDAL
15. HOLE FOR BRAKE CABLE
16. BUTT HINGE
17. SWITCH PEDAL
18. SCREW 1 1/2 IN.
19. FOOT SWITCH
20. STEERING CRANK
21. BEARING CLAMP FOR STEERING COLUMN. TWO REQUIRED
22. STEERING COLUMN 3/4 IN. PVC PIPES
23. SAFETY BOLT
24. DRIVING AND DRIVEN V-PULLY. DRIVEING PULLY, 2 IN. DIA.,
5/8 IN. BORE. DRIVEN PULLY, 10 IN. DIA., 1/2 IN. BORE. USE
1/2 IN. V-BELT, 34 IN. LONG
25. AUTO GENERATOR. SERVED AS MOTOR
26. MOTOR MOUNT 1/8 IN. IRON
27. MACHINE BOLT, 1/4 * 1 IN. WITH NUT AND LOCK WASHER
28. CARRIAGE BOLTS, 1/4 * 1 1/2 IN.
29. BALL-BEARING PILLOW BLOCK FOR 1/2 IN. SHAFT. TWO
REQUIRED
30. REAR AXLE, 1/2 * 23 1/4 IN. LENGTH OF DRILL ROD
31. BRAKE DRUM, 4 IN. V-PULLY
32. BRAKE RETURN SPRING, 1 IN. DIA.
33. BRAKE BAND, 1/2 IN. V-BELT
34. BRAKE CONTROL ARM MOUNT, WOOD BLOCK
35. MACHINE BOLT 1/4 IN.
36. REAR CHASSIS, 1/4 IN. PLYWOOD
37. FRONT CHASSIS, 1/4 IN. PLYWOOD